

FOR SHORT ANSWERS

See p 1476

FOR LONG ANSWERS

Use advanced search at bmj.com and enter question details

ENDGAMES

We welcome contributions that would help doctors with postgraduate examinations

See resources.bmj.com/bmj/authors/types-of-article#endgames

STATISTICAL QUESTION

Study design

A clinical trial investigated the effectiveness of topical versus oral ibuprofen for chronic knee pain in people over 50. In designing a trial to decide the optimum treatment approach, which answer best describes how confounding could be minimised?

- a) Double blind trial
- b) Intention to treat analyses
- c) Matching by age and sex
- d) Randomisation of research participants

Submitted by Philip Sedgwick

Cite this as: *BMJ* 2009;338:b2381

ON EXAMINATION QUIZ

Asthma

The answer to this question and more questions on this topic are available from www.onexamination.com/endgames until midnight on Wednesday.

This week's quiz is on asthma and is taken from the OnExamination revision questions for the part 2 written segment of the MRCPI examination.

A 19 year old man with a 10 year history of asthma presented with a six week history of exertional breathlessness and wheeze. He had a history of eczema and hayfever as a child. He smoked 10 cigarettes a day and worked as an electrician.

In addition, he had an unproductive cough that woke him up most nights. Systems review was negative apart from some occasional diarrhoea. His current treatment was inhaled beclomethasone 800 µg/day and inhaled salbutamol 200 µg when required, via a metered dose inhaler.

Which one of the following is the most appropriate next step in management?

- A Add aminophylline
- B Add montelukast
- C Add salmeterol
- D Change to a dry powder inhaler
- E Double the dose of beclomethasone



Fig 1 Longitudinal ultrasound of kidney

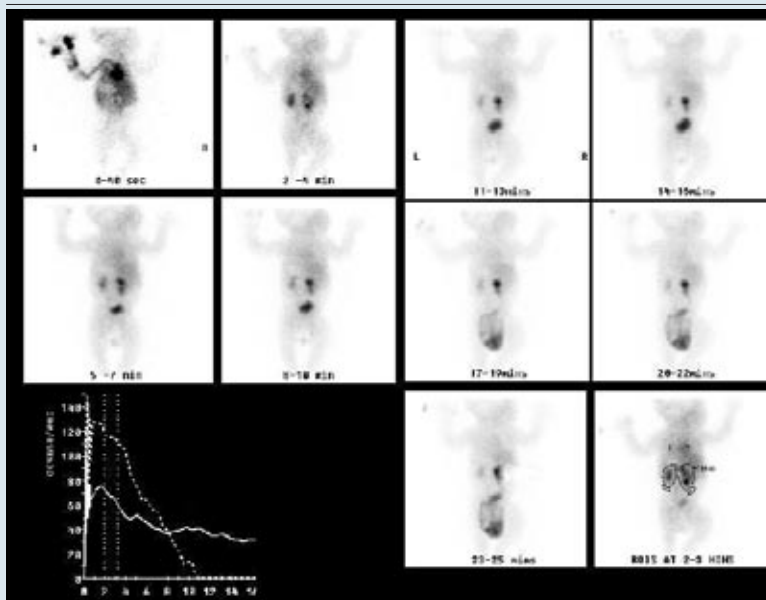


Fig 2 ^{99m}Tc-MAG3 diuresis renogram

PICTURE QUIZ

A renal riddle

A routine prenatal ultrasound scan found an abnormality in the fetus's right kidney. The neonate had normal renal function, but postnatal ultrasonography of the kidney was indicated. The findings called for further imaging tests.

- 1 What does the postnatal ultrasound (fig 1) show?
- 2 What does the nuclear medicine scan (fig 2) show, and why is this an important test?
- 3 Why might this asymptomatic neonate be investigated for vesicoureteral reflux?

Submitted by Thomas C Booth and Rikin Hargunani

Cite this as: *BMJ* 2009;338:b1424